

# DATA CENTER ASSET MANAGEMENT MADE SIMPLE

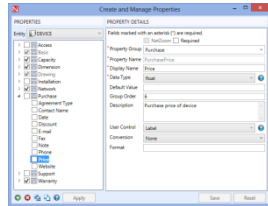
ASSETS | CONNECTIVITY | AUDIT | DIAGRAMS



# See What You Can Do with NetZoom...

## Model Data Center and Rack Elevations

User can model and visualize the data center to any level including site, location, floor, room, zone, pod, row, rack, device, card, and port as well as include all the interconnectivity between the ports.

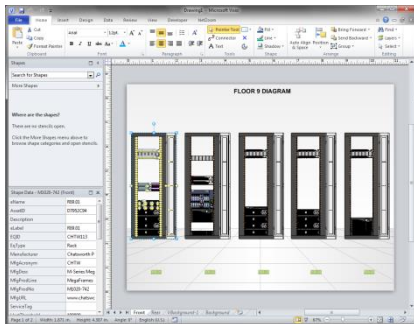


## Customize Data Properties

All devices are pre-populated with manufacturer name, product number, product description, rack space, and dimensions information. You can add more data fields and populate them with custom data as needed.

## Connectivity

User can aggregate device power and track the port connectivity and also generate a range of port-to-port connectivity reports for reporting, installation or troubleshooting purpose. Use NetZoom Pro to generate a Power connectivity trace diagram in a Microsoft Visio document.

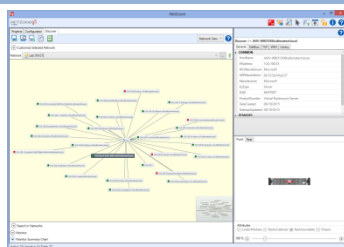
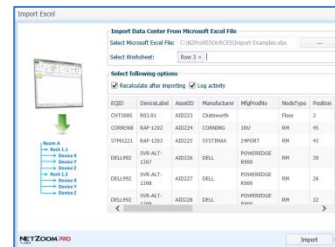


## Auto Diagram Floor Layouts and Rack Elevations in Visio

Use pre-built Microsoft Visio templates or design your own to automatically create floor layout for your Data center. You no longer have to drag-and-drop to generate data center diagrams in Microsoft Visio. Use pre-built templates, customize them or create your own to automatically generate high quality, complex data center floor layouts with drill down to rack elevations.

## Import from Excel Spreadsheets and Visio Diagrams

Ability to import asset inventory from Microsoft Excel spreadsheets enable implementation of Asset management very easy. User can also import rack elevations from existing Microsoft Visio diagrams to populate devices.



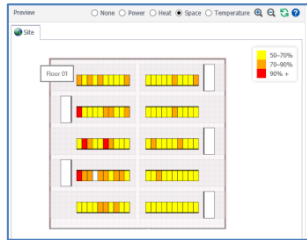
## Agentless Device Discovery & Monitoring

Device discovery helps you to locate assets in your data center and identify their attributes such as IP, host name, CPU, memory, disk and installed software. Once network devices have been discovered, the status can be monitored in real-time.

# Jump Start Your DCIM Implementation with NetZoom Pro!

## Web Application for Popular Browsers

NetZoom Pro works with most browsers including: Microsoft Edge, Internet Explorer, Mozilla Firefox, Google Chrome, Apple Safari and Opera.

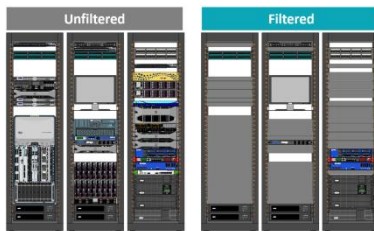
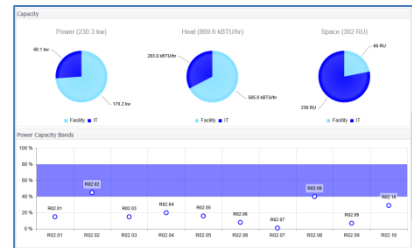


## Site Floor Layouts

Data Center Floor layouts allow users to view a top down floor view showing floor devices and their capacity attributes. Layout Previews are available for any location.

## Dashboards

Dashboards provide an overview of your data center sites without having to drill down inside them. Dashboards provide a valuable statistics about devices in data center that can help you make important business decisions by looking at the big picture.

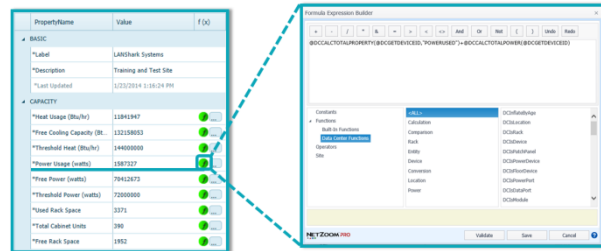


## Managing Assets by Tenant or Department

Each device may be assigned to a department or a Tenant and Data Center Explorer can now be filtered to show only devices assigned to a particular Tenant. You can easily generate Chargeback reports.

## Formula Builder

Using Formula builder, you can provide Excel-like formula or expressions for property values using parameters. There are hundreds of built-in formulas to provide values such as total power usage by a row of racks, total weight of a cabinet or total available port count within a cabinet or you may create your own custom formulas.

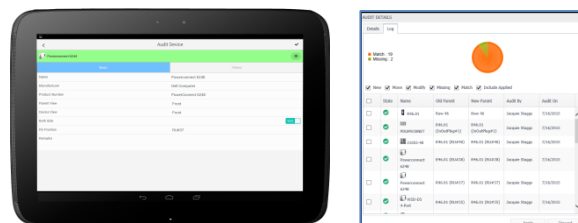


## Mobile App

The NetZoom Pro Mobile App is a valuable companion to NetZoom Pro which allows you to navigate the data center on the go. The mobile App is available for free to all NetZoom Pro users and can be downloaded from iTunes or Google Play.

## Inventory Collection & Audit

NetZoom Pro has automated the traditionally labor intensive asset audit process by enabling you to collect data center inventory directly from your handheld device. Just scan the barcode on the label of your asset to Inventory and Audit.



# DATA CENTER ASSET MANAGEMENT MADE SIMPLE

ASSETS | CONNECTIVITY | AUDIT | DIAGRAMS

**NetZoom** is our classic single user software application for the Microsoft windows platform.

NetZoom is popular among hundreds of thousands of data center and network professionals who use it daily for IT asset management and who also use it as an Add-On to Microsoft Visio to create professional network designs, diagrams, rack elevations and floor layouts. NetZoom is offered as a renewable 12-month subscription service. This product fits the need of small data centers, data closets, server rooms, rack rooms, IT rooms, and departmental IT rooms where fewer professionals may be engaged in managing various aspects of networks, racks, servers, A/V, security etc.

You must purchase an individual single user license for each user.

**NetZoom Pro** is the advanced *team/multi-user, web version* of classic NetZoom.

Use NetZoom Pro if you have a team of users who would like to collaboratively manage IT and data center infrastructure assets, rack elevations, floor layouts, and generate reports and Visio Diagrams.

NetZoom Pro has all of the features available in NetZoom plus NetZoom Pro is packed with hundreds of additional features, report templates and diagramming templates for your use to help you professionally manage your assets easily. NetZoom Pro is offered as a renewable 12-month subscription available either **On Premises** or **SaaS**. This product fits the needs of small to medium sized data centers.

You can choose either the On-Premise version or SaaS version for the same price.

## NETZOOM APPLICATIONS UPGRADE SEAMLESSLY

As your needs change...



### SERVICES & SUPPORT

Free online training available to subscribers

Request any missing equipment shape for free, and receive it within approximately 24 hours

Receive free technical support over the phone or online from our dedicated staff

Altima Technologies, Inc.  
2300 Cabot Drive, Suite 535  
Lisle, IL 60532, USA



630-281-6464



630-281-6460



[Sales@NetZoom.com](mailto:Sales@NetZoom.com)



[www.NetZoom.com](http://www.NetZoom.com)

